

SLA37 Rod Actuators

FEATURES

- 37mm Diameter
- No Load Speed up to 56mm/s
- Max Load up to 60kg (132.3lb)
- Max Load Speed up to 46.4mm/s (1.82in/sec)
- Stroke Length from 100 to 300mm (11.8in)
- IP54 Protection

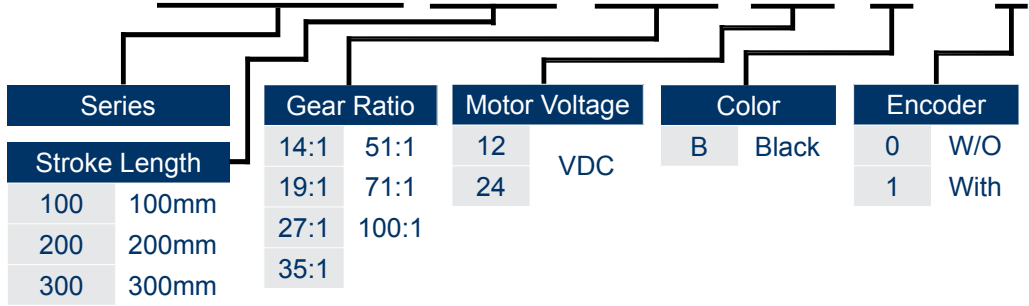


SPECIFICATIONS

Series #	Stroke Length (mm)	Load Capacity (kg)	No Load Speed (mm/s)	Max Load Speed (mm/s)	Voltage (VDC)	Gear Ratios	Self Locking Force (kg)
SLA37-100-13-24-B-01	50	0.8	44	38	24	13:1	2
SLA37-100-29-24-B-01	50	2	20.5	18.4	24	29:1	4
SLA37-100-52-24-B-01	50	3.5	11.4	10.2	24	52:1	7
SLA37-200-29-24-B-01	100	2	20.5	18.4	24	29:1	4
SLA37-200-52-24-B-01	100	3.5	11.4	10.2	24	52:1	7
SLA37-200-99-24-B-01	100	6	5.2	6	24	99:1	12
SLA37-300-13-24-B-01	150	0.8	44	38	24	13:1	2
SLA37-300-29-24-B-01	150	2	20.5	18.4	24	29:1	4
SLA37-300-52-24-B-01	150	3.5	11.4	10.2	24	52:1	7

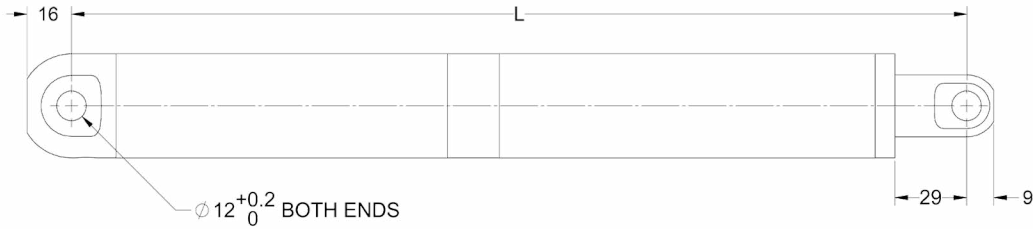
ORDERING INFORMATION

SLA37-100-100-24-B-01



L011260

DIMENSIONS

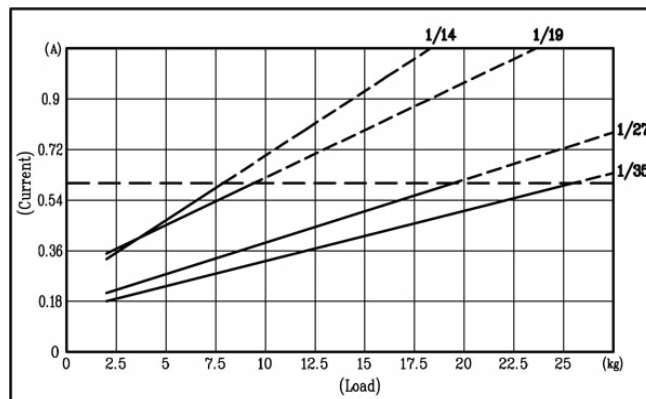
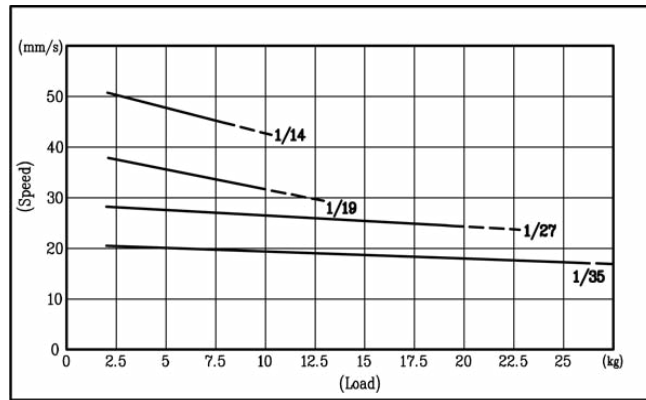


$L = S(\text{Stroke Length}) + 218(\text{mm})$

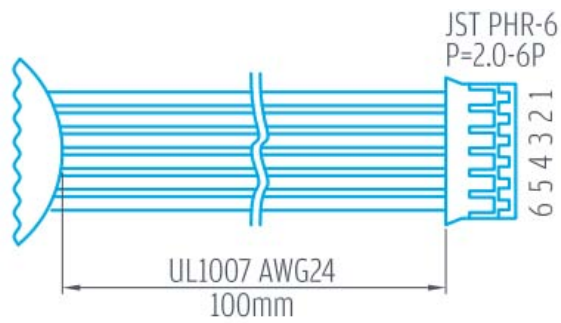
SPECIFICATIONS

Gear Ratio	14:1	19:1	27:1	35:1	51:1	71:1	100:1
No Load Speed (mm/s)	56	40	28.7	22	15	10.8	7.7
Max Load Speed (mm/s)	46.4	32.7	25	7.8	12	8.8	6.3
Load Capacity (kg)	6	7	16	21	30	45	60
Self Locking Force (kg)	10	15	20	25	40	50	70
Stroke Length (mm)	100, 200, 300						
Duty Cycle	Max 10%						
Temperature Range	-10°C ~ 60°C						
IP Grade	IP54						

TORQUE CURVES



Encoder Option:



Two Channel Encoder Connections

1. Black : -Motor
2. Red : +Motor
3. Brown : Hall Sensor Vcc
4. Green : Hall Sensor GND
5. Blue : Hall Sensor A Vout
6. Purple : Hall Sensor B Vout

Characteristics	Minimum	Maximum	Units
Supply Voltage	3.5	20	V
Supply Current	--	10	mA
Output Rise Time	--	1.5	μS
Output Fall Time	--	1.5	μS
Output Saturation Voltage	--	700	mV
Output Leakage Current	--	10	μA